



**CHILD CARE  
ALLIANCE  
LOS ANGELES**

# **CHILD CARE BRIDGE PROGRAM**

# Purpose

- To increase the number of foster children successfully placed in home-based family care settings
- To increase capacity of child care programs to meet the needs of foster children in their care
- To maximize funding to support child care needs of eligible families

# Who we serve



The target audience are children ages 0 - 5yrs and their eligible siblings



Childcare services are time-limited; maximum of 12-months only



Although the foster parent must be eligible, the program follows the child

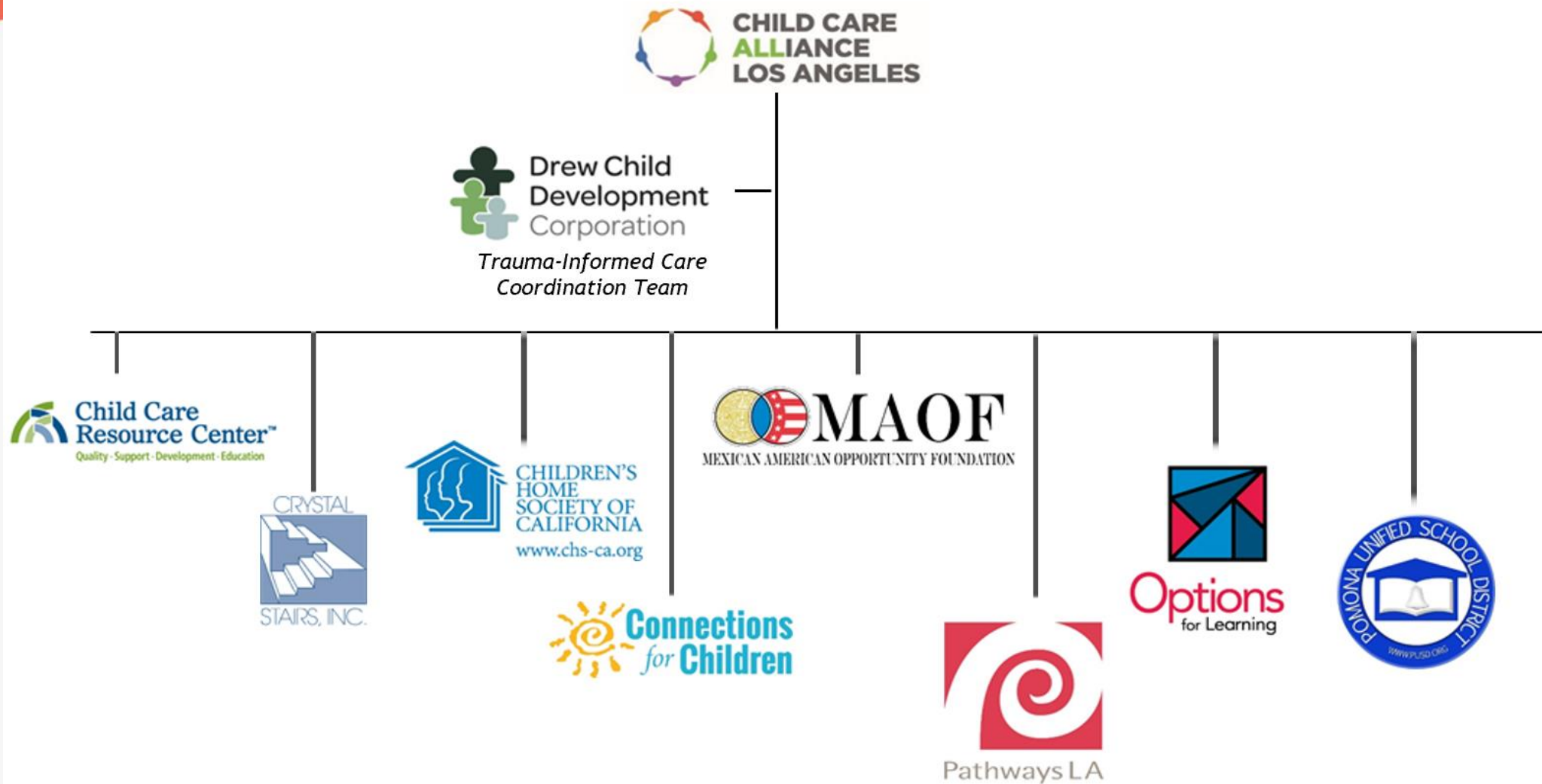


Biological parents, adoptive parents, and legal guardians are NOT eligible for Bridge services - with one exception...



Parenting teens (under age 18) and non-minor dependents (18 - 21yrs) with an open DCFS foster case

# CCALA Partnership



# Program Components

NAVIGATOR



VOUCHER



TRAUMA-INFORMED



# VOUCHERS

- Eligible families may receive a time-limited child care voucher to help pay for child care costs for foster children birth through age 5 and their siblings
- Eligible families include resource parents fostering children 0-5 years old and their eligible siblings (under age 12)
- Parenting teens (under age 18)
- Non-minor dependents with an open CDFS foster case (ages 18-21)



# VOUCHERS

- Referrals to the Child Care Bridge Program must be made through the resource family's Children's Social Worker (CSW) at DCFS
- Vouchers will be approved for an initial period of up-to six months, with a possible six-month extension
- The Resource parent will work with a Navigator to locate an appropriate child care placement for the child

# Navigator

Resource & Referral Navigators placed at each agency throughout Los Angeles County assist eligible foster care resource families with:

- Finding a child care provider
- Securing a subsidized child care placement
- Completing child care program applications, and
- Developing a plan for long-term child care appropriate to the child's age and needs



# Trauma-Informed Care

Trauma-Informed Care Advisors also are housed at each of the Resource & Referral agencies. TIC Advisors deliver trainings and coaching to child care across the county.

- Workshops are accessible to all child care providers (in person prior to pandemic; online since)
- Workshops entail various different modules specifically designed to address Trauma-Informed Care for foster care children
- Coaching is also provided to child care providers, as identified/needed

# Impact of Program

- On average, we provide child care services to 1,050 children per month (vouchers)
- The same child can be served up to 12 months in the program
- Total children served (unique number) 3,887
- Trained 2,502 unique child care providers across 1,539 facilities
- Coached 297 unique providers across 229 facilities



**Questions?**

Thank You!