



Emergency Child Care Bridge Program for Foster Children

Emergency Child Care Bridge Program for Foster Children Overview

The Bridge Program began in January 2018 statewide

In LA County - the Bridge Program launched on August 15th, 2018

DCFS contracted with CCALA to implement the program and manage
the day-to-day administrative services LA County-wide

Our program is BOTH a subsidy program AND a training/coaching program

NAVIGATOR



TRAUMA-INFORMED CARE

VOUCHER



Emergency Child Care Bridge Program for Foster Children Program Goals



Increase the number of foster children successfully placed in childcare settings

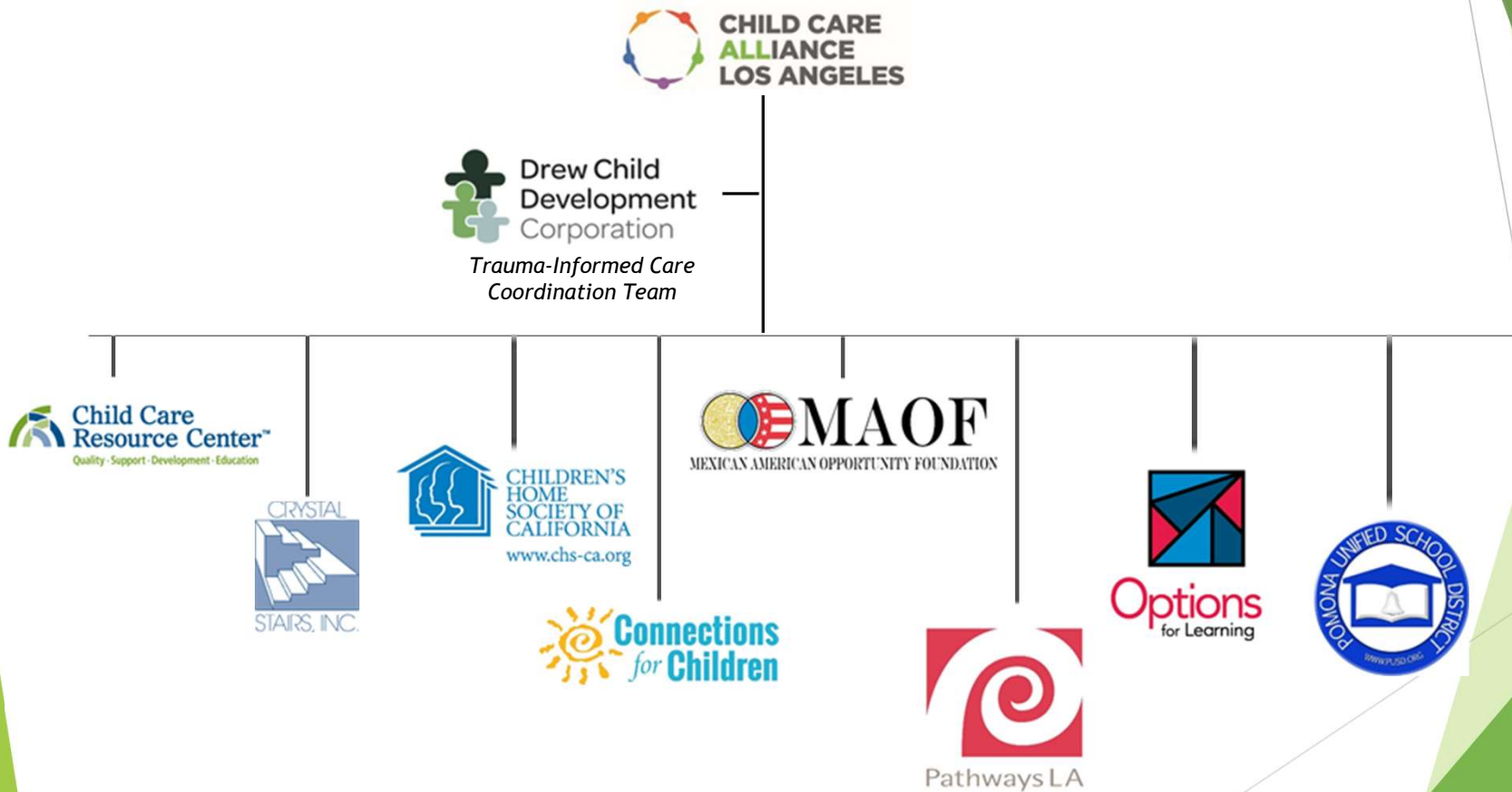


Increase capacity of childcare providers to meet the needs of foster children in their care



Maximize funding to support the childcare needs of eligible families

Emergency Child Care Bridge Program for Foster Children Organizational Chart



Emergency Child Care Bridge Program for Foster Children A Few Noteworthy Facts



The target audience are children ages 0 - 5yrs and their eligible siblings



Childcare services are time-limited; maximum of 12-months only



Although the caregiver must be eligible, the program follows the child



Biological parents, adoptive parents, and legal guardians are NOT eligible for Bridge services - with one exception...



Parenting teens (under age 18) and non-minor dependents (18 - 21yrs) with an open DCFS foster case



The Bridge Program is one of the only, if not the only, subsidized programs that provides childcare services anywhere in the state of California

NAVIGATOR SERVICES



Navigator Services

Referrals for childcare services are submitted by the Children's Social Worker (CSW) via the ECCB Bridge Portal.

- The referral must include the need for services, work and/or school, and the need schedule for each caregiver in the home.

15 Navigators across 8 Resource and Referral agencies in LA County. Navigator services include:

- Assist eligible caregivers with finding a licensed childcare provider. Exempt providers (FFN) are permissible in LA County only.
 - All caregivers/NMD parents must have an active qualifying need for services of work and/or school/vocational training
 - Provider selection is caregiver choice
 - In-home childcare is not allowed
- Authorize childcare according the qualifying need of the caregiver
- Connecting caregivers to long-term childcare

Navigator Data



Total unique children served from August 2018
through January 2022

5,529

Average number of children served per month

1,223

Successful transitions to long-term childcare within
the last 6 months

56%

Trauma-Informed Care (TIC)



10 Trauma-Informed Care Advisors (TICAs) across 8 Resource and Referral agencies

- They deliver TIC trainings and TIC coaching to providers across the county
 - Trainings developed by Drew CDC, informed by resources from:



- **Drew CDC helps to lead the TIC team by**
 - Creating the TIC curriculum that is used in the trainings, “train the trainers”
 - Core curriculum consists of eight 2-hr modules = 16hrs of training
 - Historical Trauma consists of 4 2-hr modules = 8hrs of training
 - Seeds for Infants consists of 4 2-hr modules = 8hrs of training
 - **Total of 32hrs of Trauma-Informed training**
 - Helping to guide the TICAs in coaching, “coach the coaches”

Since August 2018, TICAs have...

- Delivered **982** TIC Trainings to LA County
- Trained **4,488** unique providers
- Held **2,059** coaching sessions with Bridge Providers
- Coached **1,579** unique providers

- If you consider how many children each of these providers will serve through their career, that is a lot of impact!



Vouchers

Payment to childcare providers is based on the Reimbursement Ceiling for Subsidized Child Care, also known as the RMR. The RMR Ceilings are characterized by type of childcare, age group, and county.

- Child must have an open foster case in Los Angeles County
- Caregivers must have an eligible need
- Placement must be “out of home,” except for NMD/parenting teen
- Each eligible child may receive a maximum of 12-mos of services/vouchers

Average monthly voucher payments for Los Angeles County

\$985,198.00





Thank you!